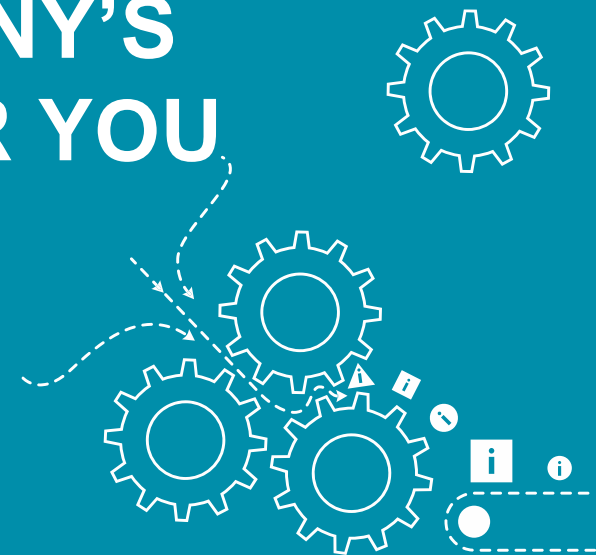
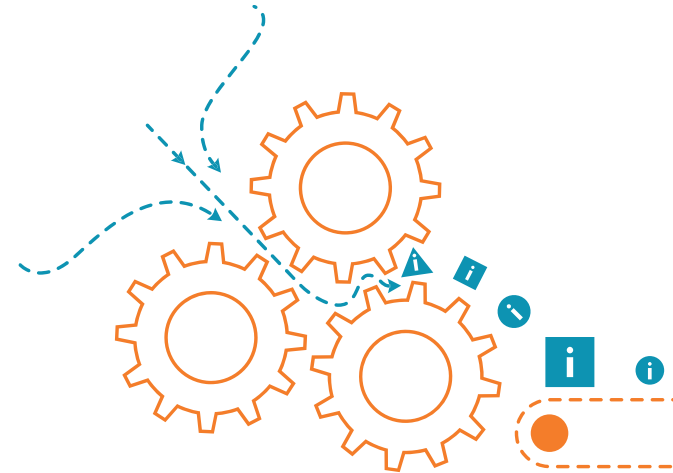


# CREDIT CLASSIFICATIONS ASSESS THE COMPANY'S PAYMENT ABILITY FOR YOU




# CREDIT CLASSIFICATION EXAMINES AND ANALYSES

- Credit classifications indicate the probability of a company to get a payment default or go bankrupt in the future years.
- Rating Alfa credit classification examines and analyses thoroughly the company's data.
- It contains the company's total classification, and in addition to that an assessment about
  - payments and payment defaults,
  - backgrounds of the company and its persons in charge, and
  - finances.



# RATING ALFA

- The maximum credit recommendation indicates in euros, how big a credit decision can be made safely.
- Rating Alfa report contains, in addition to the classification, also all background data and interpretations in easy-to-read format.


asiakastieto.fi

[Help](#)

---

**Rating Alfa**

**Suomen Asiakastieto Oy**  
 Työpajankatu 10  
 00580 Helsinki  
 PL 16, 00581 Helsinki

Data supplied on: 31.03.2017

<b>Telephone</b>	+358 10 2707000	<b>Telefax</b>	+358 0102707336	<a href="#">Trade Register data €</a>
<b>Trade register number</b>	161689	<b>Registered</b>	10.11.1961	
<b>Business ID</b>	01110279	<b>Business started</b>	01.06.1963	

**Turnover** In 2015, the turnover amounted to 43.729 thousand EUR, the length of the accounting period was 12 months, and the period ended on 31.12.2015.

**Number of employees** In 2015, the number of employees amounted to 141.

**Line of business** The company's investigated line of business on 18.08.2005 is: activities of collection agencies and credit bureaus (62910).

---

**Summary**

[Rating history](#)

The subjects rating 31.03.2017 is **AA** with financial statements, without personal credit information

Rating		
	excellent	AAA
	good+	AA+
>	good	AA
	satisfactory+	A+
	satisfactory	A
	passable	B
	poor	C

Payments	
>	very positive
	positive
	not negative
	slightly negative
	negative

Background	
	strong
	good
	satisfactory
	passable
	poor
>	no classification

Finances	
	excellent
	good
>	satisfactory
	passable
	poor
	no classification

**Maximum credit recommendation** 330 000 EUR

The background is not classified, if the information of persons in charge cannot be used due to the Credit Information Act (27§).



 asiakastieto.fi

# CONTACT US AND WE ARE HAPPY TO TELL YOU MORE!

[myynti@asiakastieto.fi](mailto:myynti@asiakastieto.fi)

Tel. +358 10 270 7200

